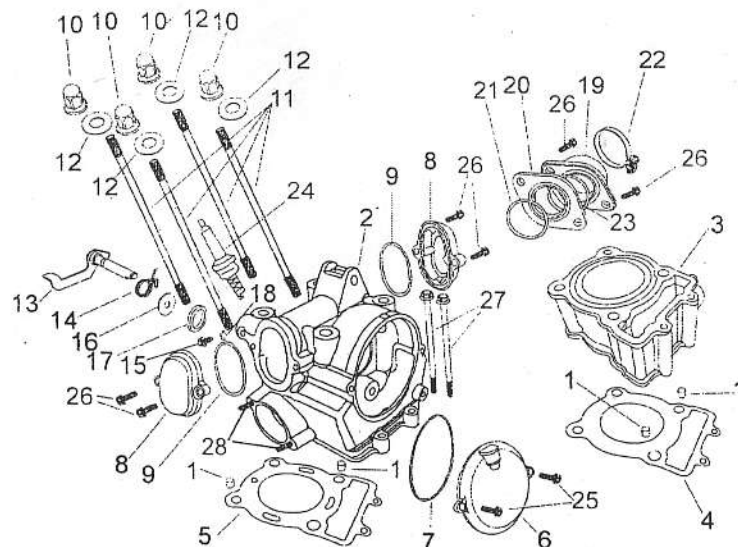
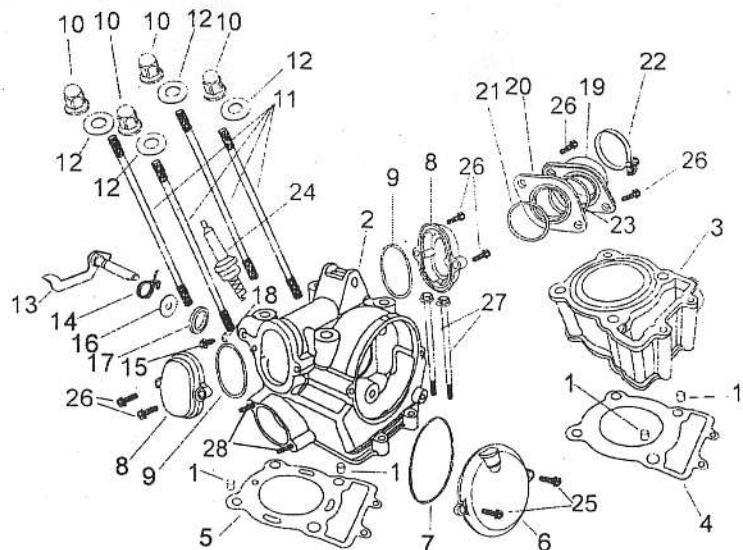


E-1 气缸、气缸头 Cylinder Head Cover



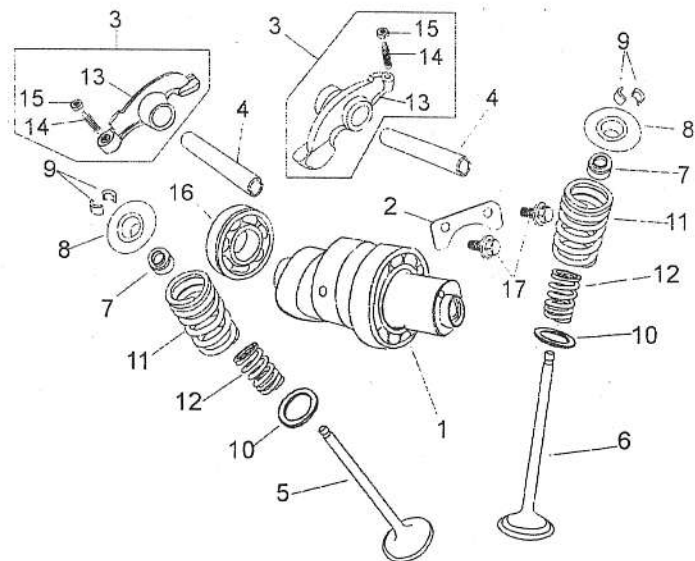
| 序号 S/N | 零部件代号 Part No. | 零部件名称 | Description | 数量 Quantity | 备注 Remark |
|-----------|-------------------|---------------------|--------------------------|----------------|--------------|
| 1 | 11118/172FMM | 定位销 13×18 | Pin, dowel, 13×18 | 4 | |
| 2 | 12210 | 气缸头组合 | Head comp., cylinder | 1 | |
| 3 | 12110 | 气缸体组合 | Block, cylinder | 1 | |
| 4 | 12121 | 气缸体密封垫 | Gasket, cylinder block | 1 | |
| 5 | 12220 | 气缸头密封垫 | Gasket, cylinder head | 1 | |
| 6 | 12242 | 气缸头左盖 | Cover, cylinder head, LH | 1 | |
| 7 | 12247 | 气缸头左盖 O 形圈 94.4×3.1 | O-ring 94.4×3.1 | 1 | |
| 8 | 12253 | 排气门盖 | Cover, exhaust valve | 2 | |
| 9 | 12255 | 排气门盖 O 形圈 55.25×2.4 | O-ring 55.25×2.4 | 2 | |
| 10 | 12313/172FMM | 盖形螺母 | Nut, cap | 4 | |
| 11 | 12342 | 气缸螺栓 | Stud, cylinder | 4 | |
| 12 | 12344/172FMM | 气缸螺栓钢垫圈 Φ10 | Washer, steel, Φ10 | 4 | |
| 13 | 14140 | 减压器 | Reductor | 1 | |
| 14 | 14143 | 减压器弹簧 | Spring, reductor | 1 | |
| 15 | 14144 | 减压器螺钉 | Screw, reductor | 1 | |

E-1 气缸、气缸头 Cylinder Head Cover



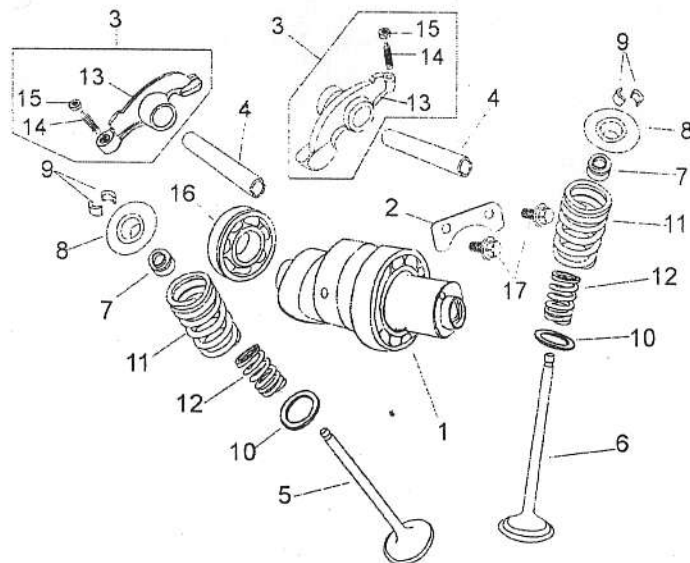
| 序号 S/N | 零部件代号 Part No. | 零部件名称 | Description | 数量 Quantity | 备注 Remark |
|-----------|-------------------|-------------------|---------------------------------|----------------|--------------|
| 16 | 14148 | 操纵臂垫圈 10×20×0.5 | Washer, operating arm 10×20×0.5 | 1 | |
| 17 | 14190 | 减压器油封 10×20×5 | Oil seal, reductor 10×20×5 | 1 | |
| 18 | 14437/172FMM | 铝垫 6.2×13×0.5 | Washer, aluminium 6.2×13×0.5 | 1 | |
| 19 | 17310 | 进气管组合 | Inlet pipe Assy | 1 | |
| 20 | 17331 | 进气管隔热垫 | Insulator, inlet pipe | 1 | |
| 21 | 17335 | 隔热垫 O 形圈 31.7×2.4 | O-ring, insulator 31.7×2.4 | 1 | |
| 22 | 17340 | 进气管卡箍 | Clamp, inlet pipe | 1 | |
| 23 | 17318 | O 形圈 | O-ring | 1 | |
| 24 | 34210/156FMI-2 | 火花塞 D8TC | Plug, spark D8TC | 1 | |
| 25 | GB/T16674.1 | 螺钉 M6×15 | Screw, M6×15 | 2 | |
| 26 | GB/T16674.1 | 螺钉 M6×25 | Screw, M6×25 | 6 | |
| 27 | GB/T16674.1 | 螺钉 M6×105 | Screw, M6×105 | 2 | |
| 28 | GB/T899 | 螺柱 M6×35 | Screw, M6×35 | 2 | |

E-2 凸轮轴、气门 Camshaft & Valve



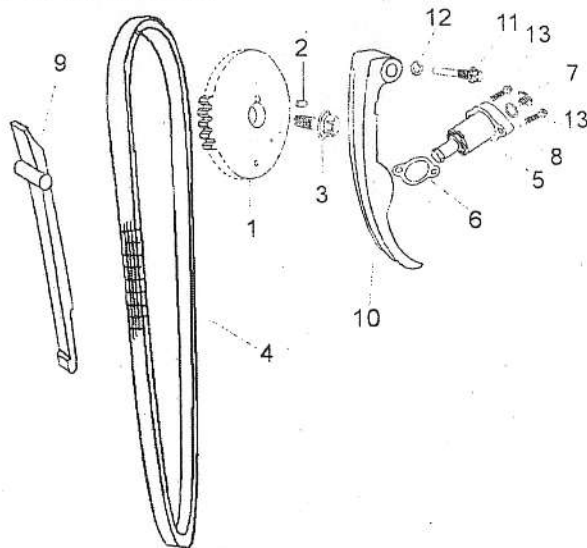
| 序号 S/N | 零部件代号 Part No. | 零部件名称 | Description | 数量 Quantity | 备注 Remark |
|-----------|-------------------|----------|----------------------------------|----------------|--------------|
| 1 | 14100 | 凸轮装配组合 | Camshaft Assy | 1 | |
| 2 | 14322 | 锁紧垫 | Washer, lock | 1 | |
| 3 | 14410 | 摇臂装配组合 | Rocker arm Assy | 2 | |
| 4 | 14413 | 摇臂轴 | Shaft, rocker arm | 2 | |
| 5 | 14720 | 排气门 | Valve, exhaust | 1 | |
| 6 | 14710 | 进气门 | Valve, intake | 1 | |
| 7 | 14730/156FMI-2 | 挡油罩 | Oil seal, valve stem | 2 | |
| 8 | 14751 | 气门弹簧上座 | Seat, valve spring upper | 2 | |
| 9 | 14752 | 气门锁夹 | Split cone, valve | 4 | |
| 10 | 14753 | 气门下弹簧座 | Seat, valve spring lower | 2 | |
| 11 | 14755 | 气门外弹簧 | Spring, valve outer | 2 | |
| 12 | 14756 | 气门内弹簧 | Spring, valve inner | 2 | |
| 13 | 14411 | 气门摇臂 | Rocker arm, valve | 2 | |
| 14 | 14415 | 气门间隙调节螺钉 | Adjusting screw, valve clearance | 2 | |
| 15 | 14416 | 气门间隙调节螺母 | Locknut | 2 | |

E-2 凸轮轴、气门 Camshaft & Valve



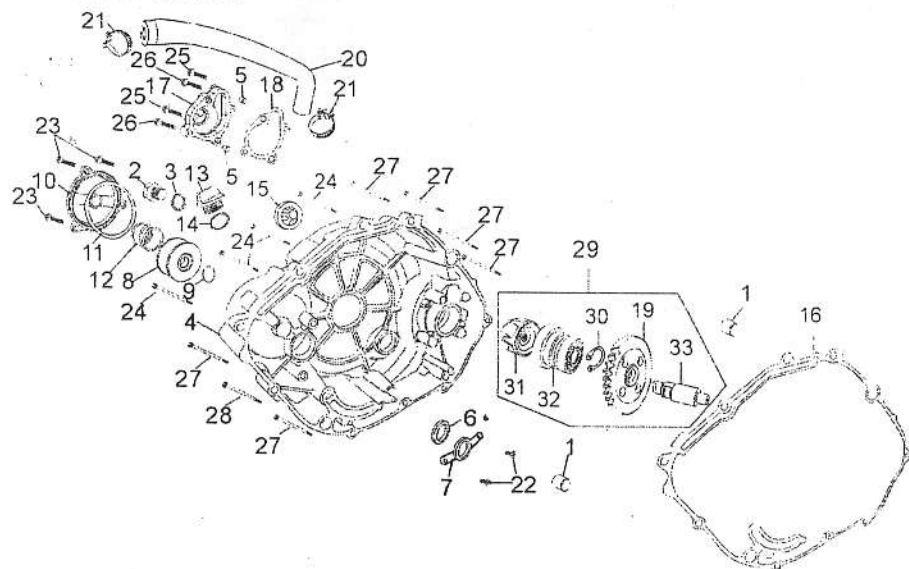
| 序号 S/N | 零部件代号 Part No. | 零部件名称 | Description | 数量 Quantity | 备注 Remark |
|-----------|-------------------|-----------|-----------------------|----------------|--------------|
| 16 | GB/T276 | 滚动轴承 6005 | Bearing, roller, 6005 | 1 | |
| 17 | GB/T16674.1 | 螺栓 M6×16 | Bolt, M6×16 | 2 | |

E-3 正时链条、张紧器 Timing Chain & Tensioner



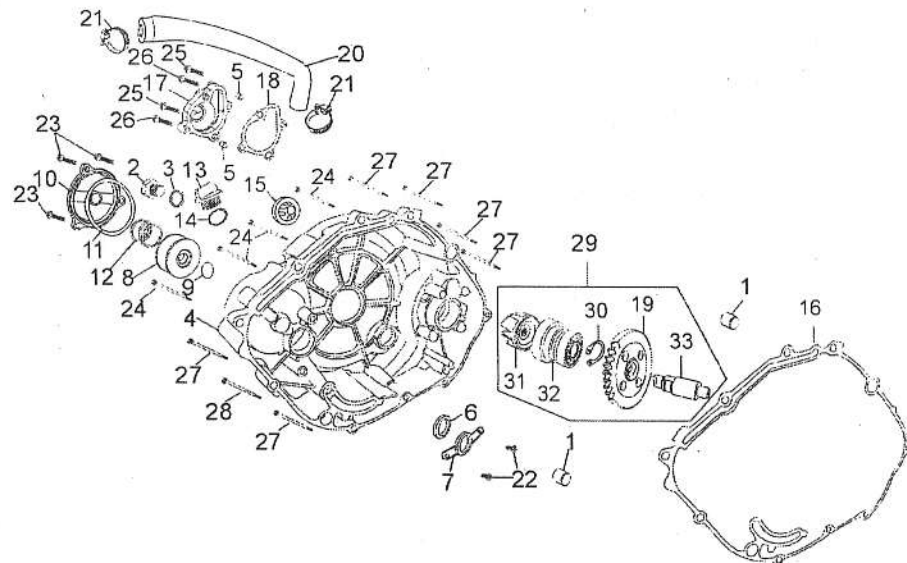
| 序号 S/N | 零 部 件 代 号 Part No. | 零 部 件 名 称 | Description | 数 量 Quantity | 备 注 Remark |
|-----------|-----------------------|-------------------|---------------------------------|-----------------|---------------|
| 1 | 14221 | 正时从动链轮 | Sprocket, timing driven | 1 | |
| 2 | 14323 | 销(Φ4×10) | Pin, (Φ4×10) | 1 | |
| 3 | 14324/2V68FMQ | 正时从动链轮螺钉 | Screw, sprocket, timing driven | 1 | |
| 4 | 14350/172FMM | 正时链条 | Chain, timing | 1 | |
| 5 | 14500/172FMM | 张紧器总成 | Tensioner Assy | 1 | |
| 6 | 14519/172FMM | 张紧器密封垫 | Packing ring, tensioner | 1 | |
| 7 | 14527/172FMM | 调节孔螺钉 | Screw, adjusting hole | 1 | |
| 8 | 14528/172FMM | O型圈 | O-ring | 1 | |
| 9 | 14610/172FMM | 导向板 | Guiding plate | 1 | |
| 10 | 14650 | 张紧板 | Tensioner | 1 | |
| 11 | 14661/172FMM | 张紧板螺栓 | Bolt, tensioner | 1 | |
| 12 | 14662/172FMM | 垫圈(铝垫 8.2×14.5×2) | Washer, aluminium, (8.2×14.5×2) | 1 | |
| 13 | GB/T16674.1 | 螺栓 M6×25 | Bolt, M6×25 | 2 | |

E-4 右曲轴箱盖 Right crankcase Cover



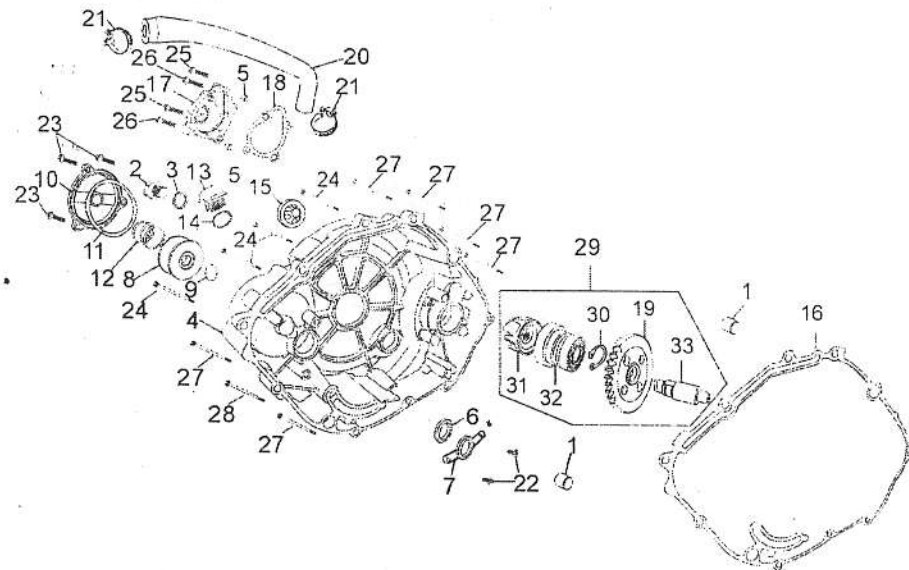
| 序号 S/N | 零 部 件 代 号 Part No. | 零 部 件 名 称 | Description | 数 量 Quantity | 备 注 Remark |
|-----------|-----------------------|---------------------|----------------------------------|-----------------|---------------|
| 1 | 11118/172FMM | 定位销 13×18 | Pin, dowel, 13×18 | 2 | |
| 2 | 11212/172FMM | 放油螺塞 M14×1.25×12 | Plug, drain, M14×1.25×12 | 1 | |
| 3 | 11213/172FMM | 放油螺塞垫圈 Φ14.2×20×1.2 | Washer, drain plug Φ14.2×20×1.2 | 1 | |
| 4 | 11311 | 右曲轴箱盖 | Cover, crankcase, RH | 1 | |
| 5 | 11318/156FMI-2 | 定位销 8×14 | Pin, dowel, 8×14 | 2 | |
| 6 | 13180/172FMM | 曲轴右油封 14×26×6 | Oil seal, crankshaft, RH 14×26×6 | 1 | |
| 7 | 13187/172FMM | 油封压板 | Plate, oil seal pressing | 1 | |
| 8 | 15480/172FMM | 机油滤芯 | Element, filter | 1 | |
| 9 | 15491/172FMM | O型圈 Φ15.8×2.4 | O-ring, Φ15.8×2.4 | 1 | |
| 10 | 15492/172FMM | 滤芯盖 | Cover, element | 1 | |
| 11 | 15493/172FMM | 滤芯盖 O型圈 Φ72.5×2.4 | O-ring, Φ72.5×2.4 | 1 | |
| 12 | 15494/172FMM | 滤芯弹簧 | Spring, element | 1 | |
| 13 | 15611/172FMM | 注油塞 | Cap, filler | 1 | |
| 14 | 15612/172FMM | O形圈 Φ17×3.1 | O-ring, Φ17×3.1 | 1 | |
| 15 | 15620/157FMI | 机油观察窗 | Glass, sight | 1 | |

E-4 右曲轴箱盖 Right crankcase Cover



| 序号 S/N | 零 部 件 代 号 Part No. | 零 部 件 名 称 | Description | 数 量 Quantity | 备 注 Remark |
|-----------|-----------------------|----------------------|-----------------------------|-----------------|---------------|
| 16 | 11319 | 右曲轴箱盖密封垫 | Gasket, crankcase cover, RH | 1 | |
| 17 | 19252 | 水泵盖 | Cover, water pump | 1 | |
| 18 | 19254 | 水泵密封垫 | Gasket, water pump | 1 | |
| 19 | 19270 | 水泵从动齿轮组合 | Gear set, water pump driven | 1 | |
| 20 | 19611 | 发动机水管 | Pipe, engine | 1 | |
| 21 | 19620 | 水管环箍组合 $\phi 25$ | Clamp set, pipe, $\phi 25$ | 2 | |
| 22 | GB/T819 | 螺栓 M5 \times 10 | Bolt, M6 \times 10 | 2 | |
| 23 | GB/T16674.1 | 螺栓 M6 \times 20 | Bolt, M6 \times 20 | 3 | |
| 24 | GB/T16674.1 | 螺栓 M6 \times 25 | Bolt, M6 \times 25 | 4 | |
| 25 | GB/T16674.1 | 螺栓 M6 \times 30 | Bolt, M6 \times 30 | 2 | |
| 26 | GB/T16674.1 | 螺栓 M6 \times 35 | Bolt, M6 \times 35 | 2 | |
| 27 | GB/T16674.1 | 螺栓 M6 \times 40 | Bolt, M6 \times 40 | 6 | |
| 28 | GB/T16674.1 | 螺栓 M6 \times 60 | Bolt, M6 \times 60 | 1 | |
| 29 | 19200 | 水泵总成 | Water pump Assy | 1 | |
| 30 | GB/T894.1 | 轴用弹性挡圈 A 型 $\phi 15$ | Snap ring A, $\phi 15$ | 1 | |

E-4 右曲轴箱盖 Right crankcase Cover



| 序号 S/N | 零部件代号 Part No. | 零部件名称 | Description | 数量 Quantity | 备注 Remark |
|-----------|-------------------|-------|-------------------|----------------|--------------|
| 31 | 19211 | 叶轮 | Impeller | 1 | |
| 32 | 19251 | 水泵体 | Body, water pump | 1 | |
| 33 | 19253 | 水泵轴 | Shaft, water pump | 1 | |