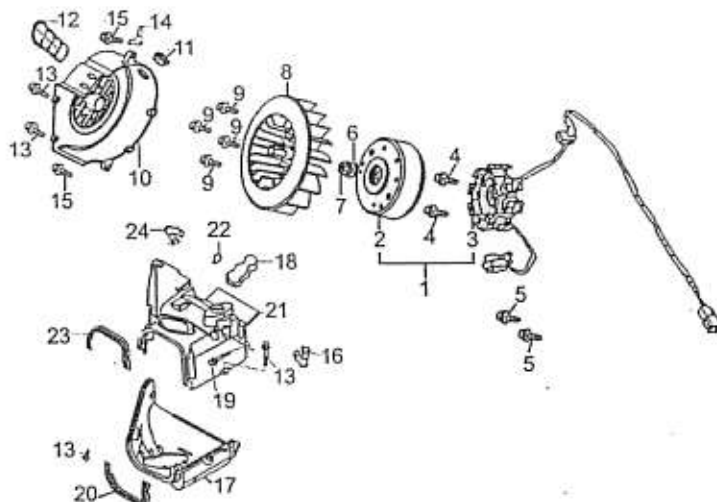


Parts Catalog for

LF150T-5

FIG 1

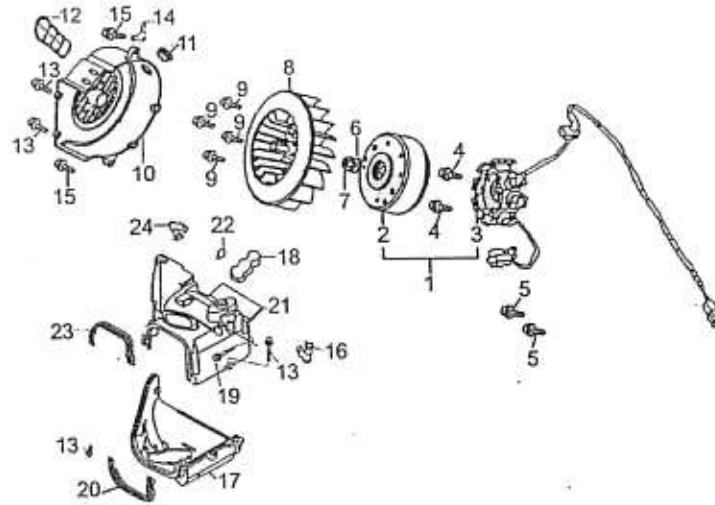
Fan Cover
Generator



NO.	CODE NAME	PART NUMBER	PRICE	DESCRIPTION	QUANTITY	NOTE
1		301.001	42.75	magneto assy.	1	
2				rotor comp.	1	
3				stator comp.	1	
4		301.004	0.80	bolt M6X20	2	
5		301.005	0.80	bolt M5X12	2	
6		301.006	0.50	washer 12	1	
7		301.007	0.65	nut M12X1.25	1	
8		301.008	9.46	fan	1	
9		301.009	0.80	bolt M6X18	4	
10		301.010	16.80	fan cover	1	
11		301.011	0.70	rubber plug	1	
12		301.012	3.86	cooling guide tube, carburetor	1	
13		301.013	0.80	screw M5X16	4	
14		301.014	1.26	bracket	1	
15		301.015	0.80	bolt M6X25	3	
16		301.016	1.30	clamp	1	
17		301.017	9.98	shroud A	1	
18		301.018	1.35	cover, tensioner	1	
19		301.019	0.80	bolt M6X25	1	
20		301.020	1.08	seal, shroud A	1	
21		301.021	10.96	shroud B	1	

FIG 1

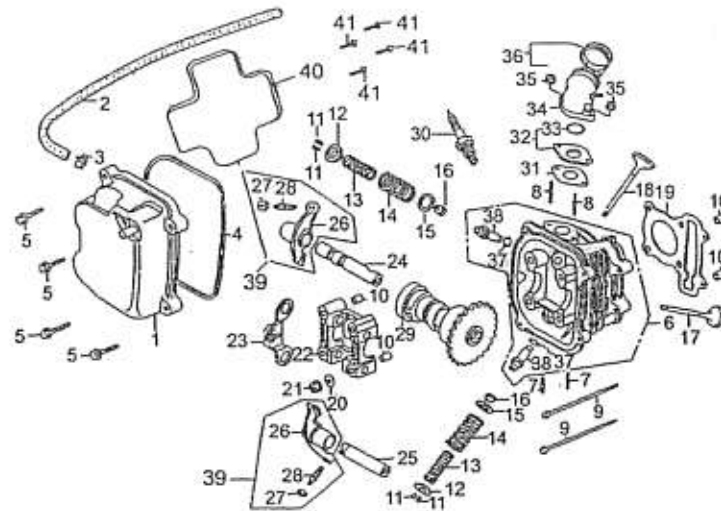
Fan Cover
Generator



NO.	CODE NAME	PART NUMBER	PRICE	DESCRIPTION	QUANTITY	NOTE
22		301.022	0.50	clip	1	
23		301.023	1.03	seal, shroud B	1	
24		301.024	1.27	clamp, breather tube	1	

FIG 2

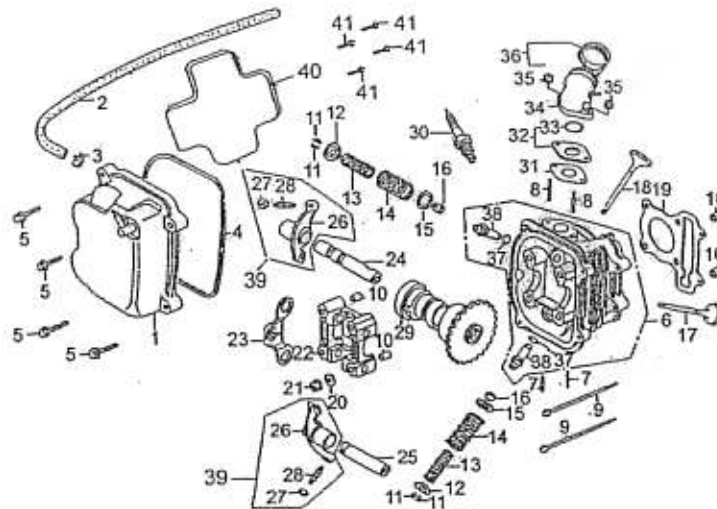
Cylinder Head Cover
Cylinder Head



NO.	CODE NAME	PART NUMBER	PRICE	DESCRIPTION	QUANTITY	NOTE
1		302.001	9.87	cylinder head cover comp.	1	
2		302.002	0.98	exhaust tube	1	
3		302.003	0.65	clip, exhaust tube	1	
4		302.004	1.87	gasket, cylinder head cover	1	
5		302.005	0.80	bolt M6X25	4	
6		302.006	38.99	cylinder head comp.	1	
7		302.007	0.85	stud bolt M6X32	2	
8		302.008	0.85	stud bolt M6X50	2	
9		302.009	0.95	bolt M6X100	2	
10		302.010	0.75	dowel pin 10X16	4	
11		302.011	1.88	valve clip	4	
12		302.012	3.31	upper valve spring seat	2	
13		302.013	2.50	inner valve spring	2	
14		302.014	2.55	outer valve spring	2	
15		302.015	2.67	lower valve spring seat	2	
16		302.016	1.58	seal, valve stem	2	
17		302.017	8.75	exhaust valve	1	
18		302.018	8.75	inlet valve	1	
19		302.019	1.59	gasket, cylinder head	1	
20		302.020	0.50	washer 8	4	
21		302.021	0.65	nut M8	4	

FIG 2

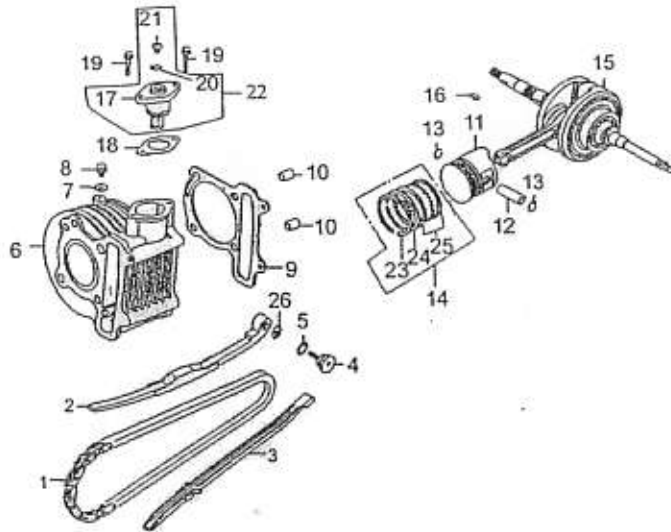
Cylinder Head Cover
Cylinder Head



NO.	CODE NAME	PART NUMBER	PRICE	DESCRIPTION	QUANTITY	NOTE
22		302.022	18.37	rocker arm holder	1	
23		302.023	4.99	stopper	1	
24		302.024	3.17	rocker arm shaft set	1	
25		302.025	2.82	rocker arm shaft	1	
26		302.026	8.23	valve rocker arm	2	
27		302.027	0.65	adjusting nut, valve clearance	2	
28		302.028	1.22	adjusting screw, valve clearance	2	
29		302.029	10.68	cam shaft comp.	1	
30		302.030	2.80	spark plug	1	
31		302.031	1.57	gasket, intake pipe	1	
32		302.032	1.20	heat insulation gasket	1	
33		302.033	1.50	O-ring	1	
34		302.034	4.79	inlet pipe set	1	
35		302.035	0.65	nut M6	2	
36		302.036	1.03	inlet pipe clip	1	
37		302.037	1.03	O-ring	2	
38		302.038	5.29	guide pipe, valve	2	
39		302.039	10.10	rocker arm set	2	
40		302.040	0.99	plate	1	
41		302.041	0.65	screw ST4X8	4	

FIG 3

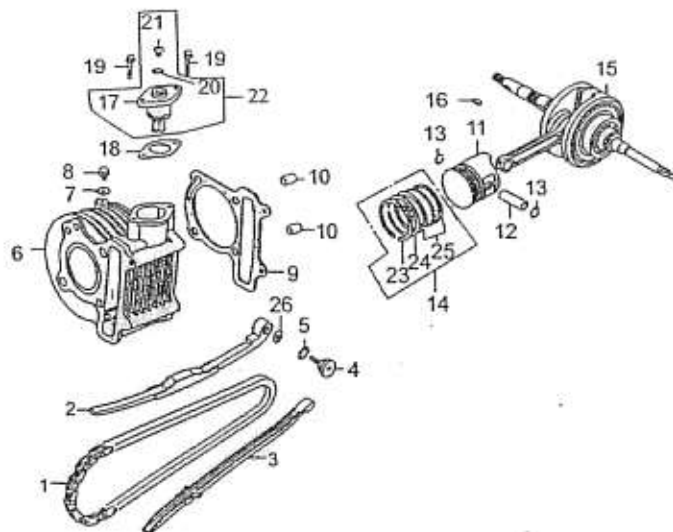
Cylinder, Crankshaft
Piston



NO.	CODE NAME	PART NUMBER	PRICE	DESCRIPTION	QUANTITY	NOTE
1		303.001	9.32	timing chain	1	
2		303.002	4.32	tension plate	1	
3		303.003	4.08	guide	1	
4		303.004	1.98	screw	1	
5		303.005	1.27	O-ring 15.2X1.5	1	
6		303.006	32.99	cylinder comp.	1	
7		303.007	0.50	washer 6.5	1	
8		303.008	0.80	bolt M6X12	1	
9		303.009	1.36	cylinder gasket	1	
10		303.010	0.80	dowel pin 10X16	2	
11		303.011	17.99	piston	1	
12		303.012	2.65	pin, piston	1	
13		303.013	0.90	circlip, piston pin	2	
14		303.014	8.30	piston ring set	1	
15		303.015	45.66	crankshaft & con-rod comp.	1	
16		303.016	2.25	woodruff key	1	
17		303.017	7.26	tensioner	1	
18		303.018	0.70	tensioner gasket	1	
19		303.019	0.85	bolt M6X22	2	
20		303.020	1.20	O-ring 1.5X9.5	1	
21		303.021	0.80	screw M6X6	1	

FIG 3

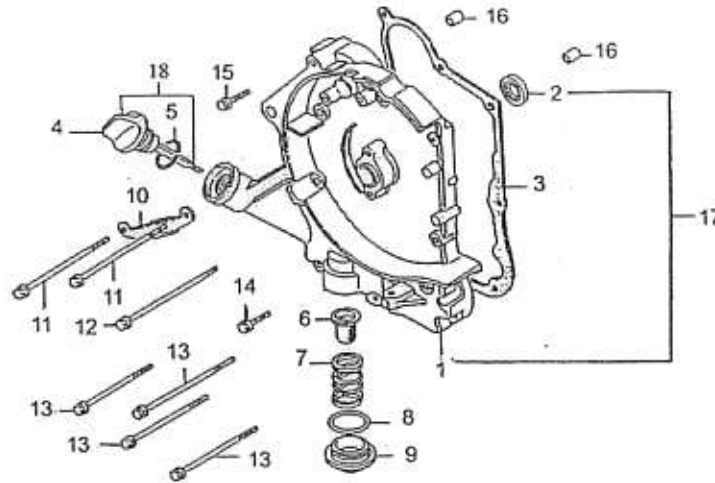
Cylinder, Crankshaft
Piston



NO.	CODE NAME	PART NUMBER	PRICE	DESCRIPTION	QUANTITY	NOTE
22		303.022	9.50	tensioner assy.	1	
23		303.023		piston ring set No.1	1	
24		303.024		piston ring set No.2	1	
25		303.025		piston ring set (oil)	1	
26		303.026	0.50	washer	1	

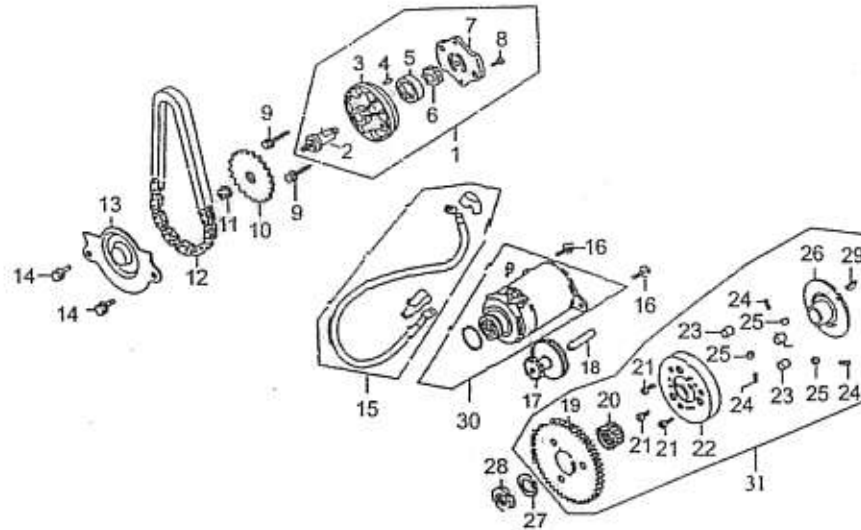
FIG 4

Right Crankcase Cover



NO.	CODE NAME	PART NUMBER	PRICE	DESCRIPTION	QUANTITY	NOTE
1		304.001	23.79	right crankcase cover	1	
2		304.002	1.17	oil seal 19.8X30X5	1	
3		304.003	1.36	gasket, right crankcase cover	1	
4		304.004	3.67	dipstick	1	
5		304.005	0.89	O-ring	1	
6		304.006	2.99	oil filter screen	1	
7		304.007	1.09	spring	1	
8		304.008	1.29	O-ring	1	
9		304.009	1.96	oil filter screen cover	1	
10		304.010	1.59	clamp	2	
11		304.011	0.95	bolt M6X110	2	
12		304.012	0.95	bolt M6X100	1	
13		304.013	0.95	bolt M6X95	4	
14		304.014	0.85	bolt M6X30	1	
15		304.015	0.85	bolt M6X35	1	
16		304.016	0.85	dowel pin 8X14	2	
17		304.017		right crankcase cover set	1	
18		304.018		dipstick comp.	1	

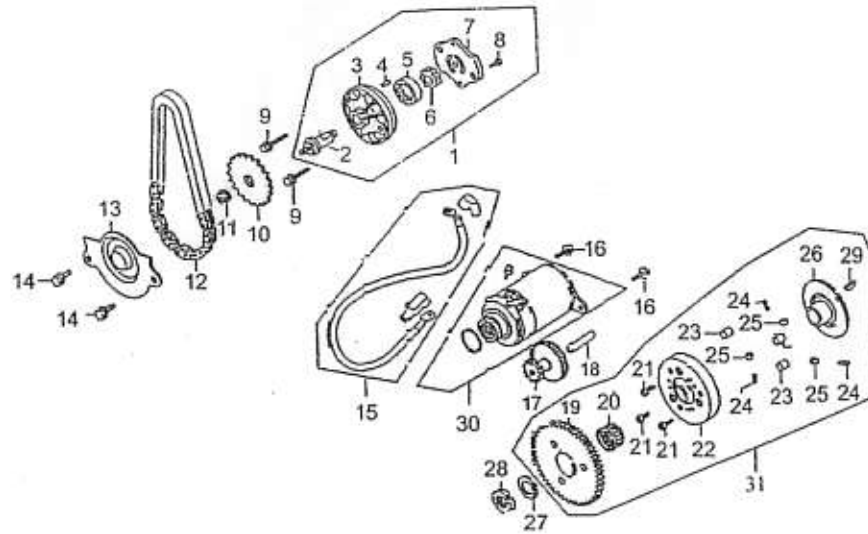
FIG 5

Start Motor
Oil Pump

NO.	CODE NAME	PART NUMBER	PRICE	DESCRIPTION	QUANTITY	NOTE
1		305.001	22.89	oil pump set	1	
2		305.002		oil pump shaft	1	
3		305.003		oil pump body	1	
4		305.004		dowel pin 4X6.5	1	
5		305.005		outer rotor, oil pump	1	
6		305.006		inner rotor, oil pump	1	
7		305.007		oil pump cover	1	
8		305.008		bolt M3X10	1	
9		305.009	0.80	bolt M6X30	2	
10		305.010	4.32	oil pump driven sprocket	1	
11		305.011	0.65	nut M6	1	
12		305.012	9.97	drive chain	1	
13		305.013	7.96	driven sprocket stopper	1	
14		305.014	0.80	bolt M6X12	2	
15		305.015	2.20	wire, start motor	1	
16		305.016	0.80	bolt M6X16	2	
17		305.017	9.36	twin gear	1	
18		305.018	4.66	shaft, twin gear	1	
19		305.019	9.69	gear, start clutch	1	
20		305.020	4.58	needle bearing	1	
21		305.021		bolt M6X10	3	

FIG 5

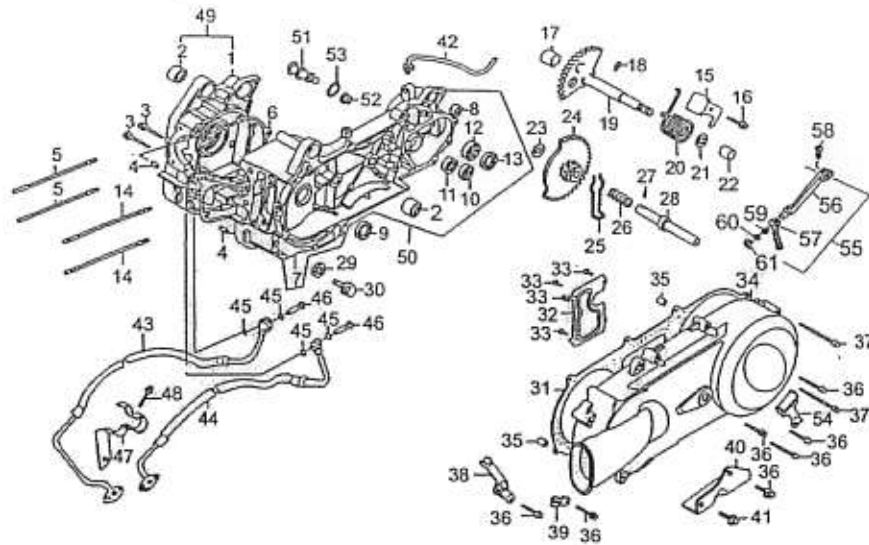
Start Motor
Oil Pump



NO.	CODE NAME	PART NUMBER	PRICE	DESCRIPTION	QUANTITY	NOTE
22		305.022		start clutch body	1	
23		305.023		roller 10X10	3	
24		305.024		spring	3	
25		305.025		spring, housing	3	
26		305.026		start clutch cover	1	
27		305.027	0.90	thrust washer	1	
28		305.028	1.80	nut M22	1	
29		305.029		woodruff key	1	
30		305.030	50.30	start motor	1	
31		305.031	36.99	start clutch assy.	1	

FIG 6

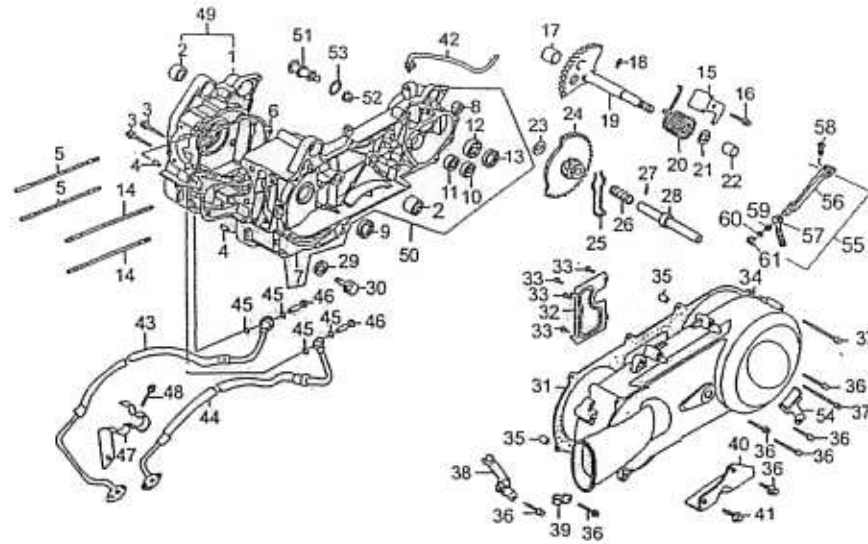
Crankcase



NO.	CODE NAME	PART NUMBER	PRICE	DESCRIPTION	QUANTITY	NOTE
1		306.001	53.69	crankcase comp., right	1	
2		306.002	2.76	bush, engine hanger	2	
3		306.003	0.80	bolt M6X50	2	
4		306.004	0.80	dowel pin 8X14	2	
5		306.005	1.59	cylinder stud A	2	
6		306.006	0.98	gasket, crankcase	1	
7		306.007		left crankcase	1	
8		306.008		lower bush, right shock absorber	1	
9		306.009	1.85	oil seal 19.8X30X5	1	
10		306.010	4.79	bearing 6301 TMB	1	
11		306.011	4.17	bearing 6002	1	
12		306.012	4.88	bearing 6004 DU	1	
13		306.013	1.80	oil seal 27X42X7	1	
14		306.014	1.62	cylinder stud B	2	
15		306.015	2.97	stopper	1	
16		306.016	0.80	bolt M6X14	1	
17		306.017	2.75	bush 12X16X12	1	
18		306.018	1.17	pin 4.5	1	
19		306.019	13.86	start shaft comp.	1	
20		306.020	3.16	return spring	1	
21		306.021	0.60	washer 14	1	

FIG 6

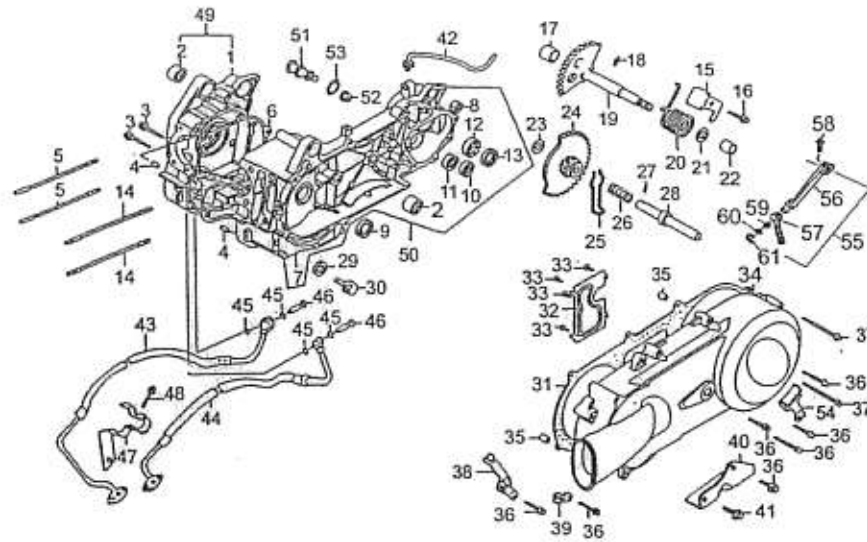
Crankcase



NO.	CODE NAME	PART NUMBER	PRICE	DESCRIPTION	QUANTITY	NOTE
22		306.022	1.12	bush	1	
23		306.023	0.55	washer 12.5	1	
24		306.024	6.59	idle gear comp.	1	
25		306.025	0.92	friction spring	1	
26		306.026	0.87	drive spring	1	
27		306.027	0.89	roller 3X8.5	1	
28		306.028	4.05	shaft, idle gear	1	
29		306.029	0.50	washer, drain bolt	1	
30		306.030	0.85	drain bolt M12X14	1	
31		306.031	2.12	gasket, left crankcase cover	1	
32		306.032	1.97	guide plate	1	
33		306.033	0.75	screw ST4X8	4	
34		306.034	32.79	left crankcase cover	1	
35		306.035	0.90	dowel pin 8X14	2	
36		306.036	0.85	bolt M6X40	6	
37		306.037	0.85	bolt M6X65	2	
38		306.038	1.98	clamp	1	
39		306.039	1.09	clamp	1	
40		306.040	2.63	stopper, main stand	1	
41		306.041	0.80	bolt M6X12	1	
42		306.042	1.92	air vent tube	1	

FIG 6

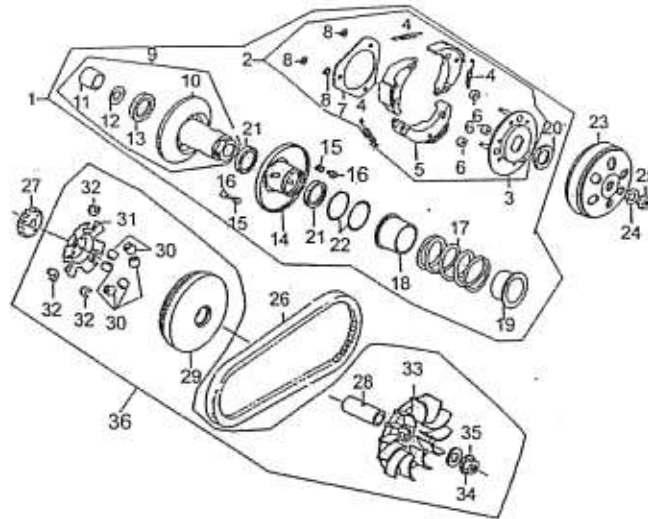
Crankcase



NO.	CODE NAME	PART NUMBER	PRICE	DESCRIPTION	QUANTITY	NOTE
43		306.043	5.74	oil inlet hose comp.	1	
44		306.044	5.74	oil outlet hose comp.	1	
45		306.045	0.79	gasket, oil pipe	4	
46		306.046	1.05	bolt, inner hole	1	
47		306.047	1.79	supporter, oil hose	4	
48		306.048	0.80	bolt M6X12	2	
49		306.049		right crankcase assy.	1	
50		306.050		left crankcase assy.	1	
51		306.051	3.82	pin, brake shoe	1	
52		306.052	0.60	nut M8	1	
53		306.053	0.85	O-ring 7.5X1.5	1	
54		306.054	2.13	clamp	1	

FIG 7

Driving & Driven Pulley



NO.	CODE NAME	PART NUMBER	PRICE	DESCRIPTION	QUANTITY	NOTE
1		307.001	46.38	driven pulley assy.	1	
2		307.002		clutch driving plate assy.	1	
3		307.003		driving plate comp.	1	
4		307.004		spring	3	
5		307.005		clutch shoe set	3	
6		307.006		damping rubber	3	
7		307.007		pressure plate	1	
8		307.008		circlip	3	
9		307.009		driven plate comp.	1	
10		307.010		driven plate	1	
11		307.011		needle bearing 20X29X18	1	
12		307.012		bearing 6902U	1	
13		307.013		circlip 28	1	
14		307.014		driven sliding plate	1	
15		307.015		guide pin	3	
16		307.016		roller	3	
17		307.017		spring	1	
18		307.018		retainer, right spring	1	
19		307.019		retainer, left spring	1	
20		307.020		nut M28	1	
21		307.021		oil seal 34X41X4	2	