

图17 方向把总成
(PICTURE15 STEERING HANDLE ASSY)

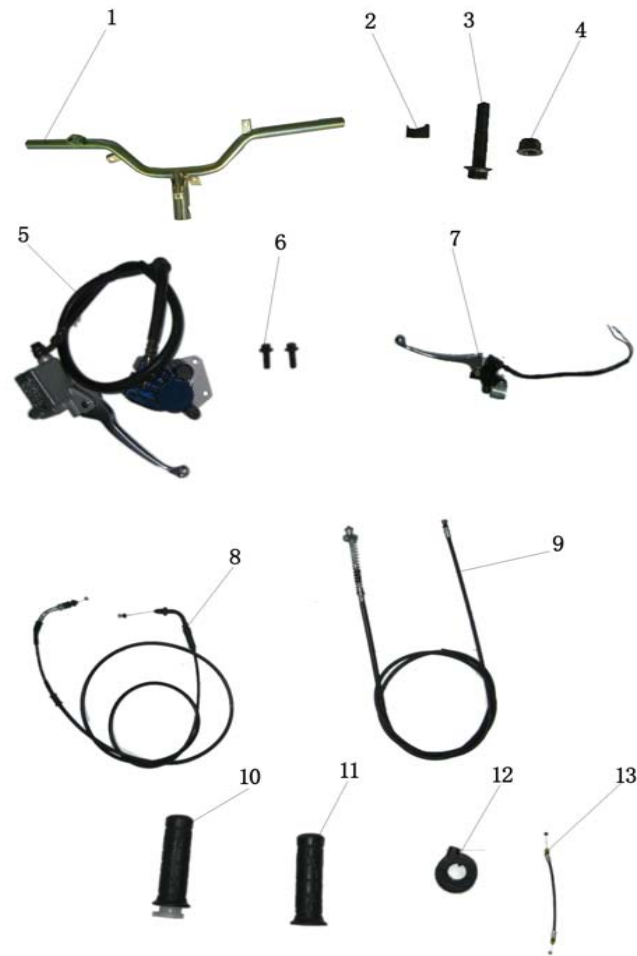


图17 方向把总成
(PICTURE15 STEERING HANDLE ASSY)

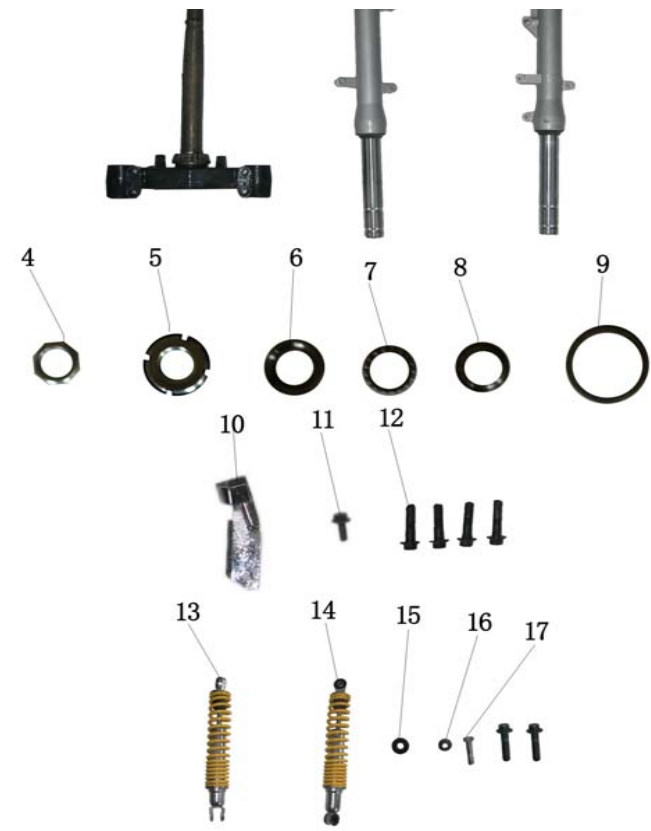
TOTAL NO.	PEF NO.	PART NO.	ENGLISH NAME	Q'TY	UNIT PRICE(\$)
150T-3-001	1		STEERING HANDLE	1	6
150T-3-002	2		DISTANCE SLEEVE	1	0.65
150T-3-003	3	GB/T5789	M10×45 BOLT	1	0.2
150T-3-004	4	GB/T6187.1	M10 NUT	1	0.1
150T-3-005	5		FR HYDRAULIC BRAKE ASSY	1	37
150T-3-006	6	GB/T5789	M8×25 BOLT	2	0.1/unit
150T-3-007	7		BRACKET,RR BRAKE COMP	1	3
150T-3-008	8		CABLE , THROOTLE GRIP	1	1.6
150T-3-009	9		WIRE ROPE , RR BRAKE	1	1.6
150T-3-010	10		THROOTLE GRIP	1	0.97
150T-3-011	11		HANDLE, L	1	0.8
150T-3-012	12		FIXING SEAT,GAS	1	0.5
150T-3-013	13		CABLE , CUSHION	1	0.5

图18 前后减震器总成
(FR&RR SHOCK ABSORBER)



图18 前后减震器总成
(FR&RR SHOCK ABSORBER)

TOTAL NO.	PEF NO.	PART NO.	ENGLISH NAME	Q'TY	UNIT PRICE(\$)
150T-3-014	1		STEERING ITEM ASSY	1	12
150T-3-015	2		FR .L.SHOCK ABSORBER	1	16
150T-3-016	3		FR. R.SHOCK ABSORBER	1	16
150T-3-017	4		NUT LOCK I	1	0.73



150T-3-018	5		NUT LOCK II	1	0.5
150T-3-019	6		INNER RING,BEARING UP	1	0.5
150T-3-020	7		STEEL BALL RETAINER(0.65)	1	0.65
150T-3-021	8		EX RING,BEARING UP	1	0.4
150T-3-022	9		WASHER	1	0.4
150T-3-023	10		CLIP	1	0.65
150T-3-024	11	GB/T578 9	M6×16 BOLT	1	0.07
150T-3-025	12	GB/T578 9	M10×40 BOLT	6	0.2/unit
150T-3-026	13		REAR.R.SHOCK ABSORBER	1	8
150T-3-027	14		REAR.L.SHOCK ABSORBER	1	8
150T-3-028	15	GB/T96	WASHER 8	1	0.02
150T-3-029	16	GB/T617 7.1	M8 NUT	1	0.2
150T-3-030	17	GB/T578 1	M8×35 BOLT	1	0.1

图19 前后轮总成
FR&RR WHEEL ASSY)

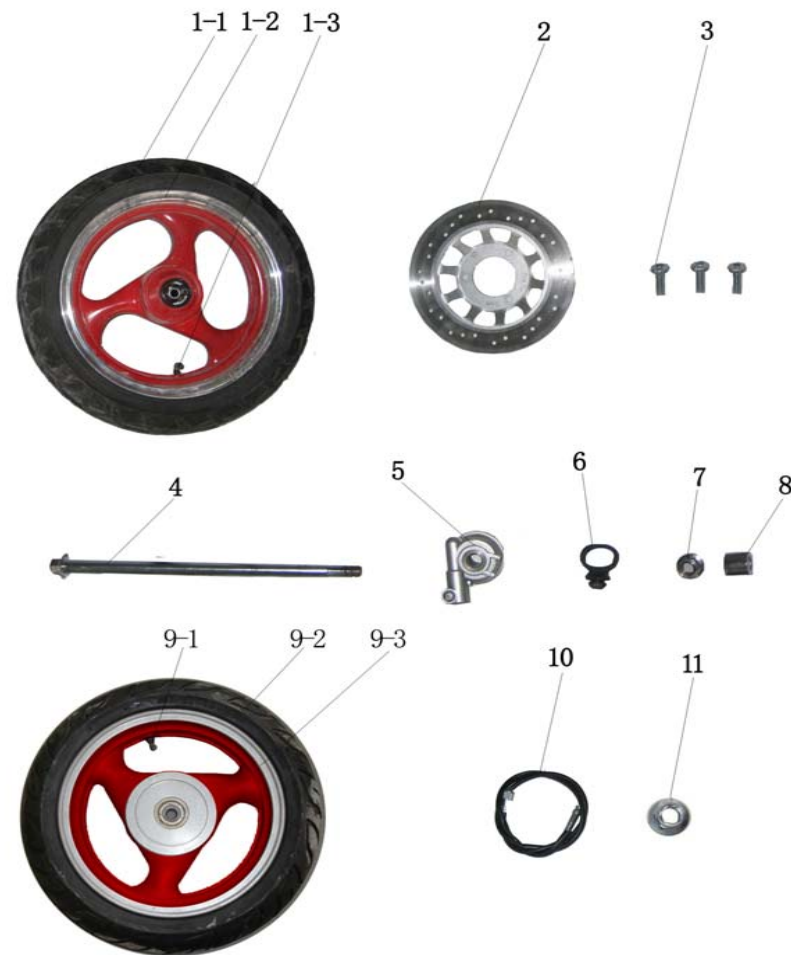


图19 前后轮总成
FR&RR WHEEL ASSY)

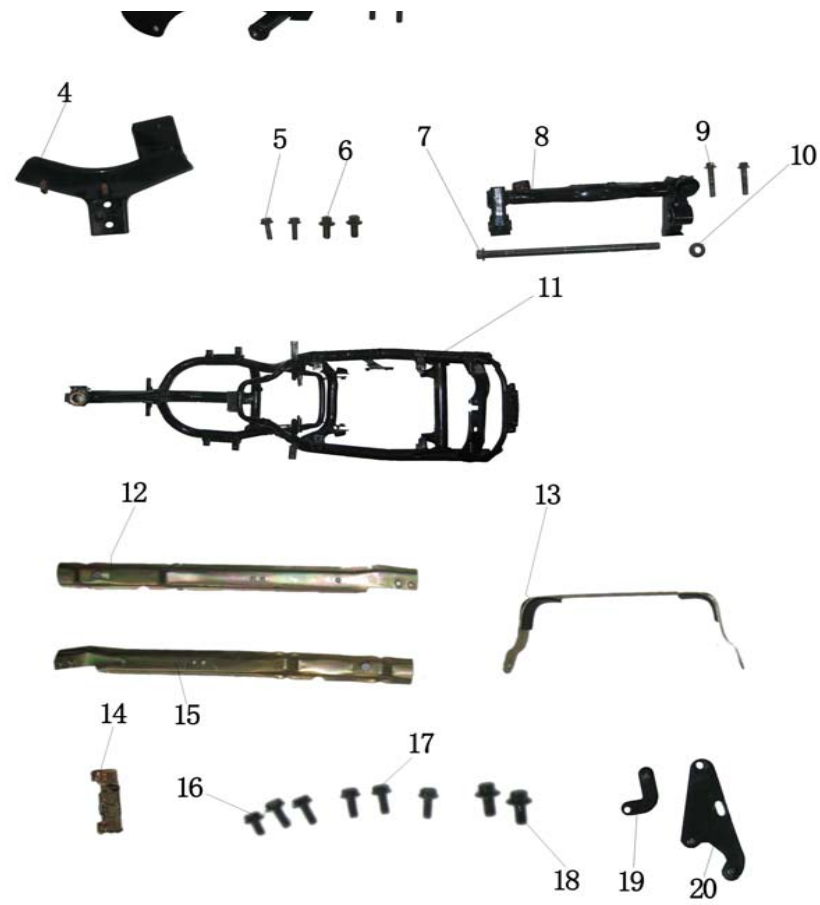
TOTAL NO.	PEF NO.	PART NO.	ENGLISH NAME	Q'TY	UNIT PRICE(\$)
150T-3-031	1-1		FRONT TYRE130/60-13	1	24
150T-3-032	1-2		RIM FR.WHEEL	1	34
150T-3-033	1-3		AIR.NOIILE	1	0.65
150T-3-034	2		FRONT BRAKE DISK	1	7
150T-3-035	3		SEAT SCREW, BRAKE DISK	3	0.3/unit
150T-3-036	4		FR AXLE	1	2
150T-3-037	5		COUNTER	1	5
150T-3-038	6		THIMBLE	1	0.2
150T-3-039	7	GB/T618 7.2	M12 NUT	1	0.2
150T-3-040	8		DISTANCE SLEEVE	1	0.65
150T-3-041	9-1		AIR.NOIILE	1	0.65
150T-3-042	9-2		RAER TYRE 130/60-13	1	24
150T-3-043	9-3		RIM .REAR.WHEEL	1	34
150T-3-044	10		ODOMETER FLEXIBLE SHAFT	1	1.6
150T-3-045	11	GB/T618 7.2	M16 NUT	1	0.2

图20 车架总成
(FRAME ASSY)



图20 车架总成
(FRAME ASSY)

TOTAL NO.	PEF NO.	PART NO.	ENGLISH NAME	Q'TY	UNIT PRICE(\$)
150T-3-046	1		MOUNTING BOARD,RR SHOCK ABSORBER	1	12
150T-3-047	2	GB/T578 9	M8×30 BOLT	2	0.1/unit



150T-3-048	3		HOLDER,FR.CUSHION	1	2
150T-3-049	4		HOLDER HORN	1	1.6
150T-3-050	5	GB/T5789	M6×20 BOLT	2	0.05/unit
150T-3-051	6	GB/T5789	M8×16 BOLT	2	0.06/unit
150T-3-052	7		CRADLE BEARING,I	1	1.3
150T-3-053	8		CRADLE	1	6
150T-3-054	9	GB/T5789	M10×55 BOLT	2	0.2/unit
150T-3-055	10	GB/T6187.1	M10 NUT	1	0.1
150T-3-056	11		MAIN FRAME	1	55
150T-3-057	12		PROTECTING BAR .L	1	2
150T-3-058	13		BRACKET,FUEL TANK	1	1.6
150T-3-059	14		CUSHION LOCK BASE	1	2
150T-3-060	15		PROTECTING BAR .R	1	2
150T-3-061	16	GB/T5789	M6×12 BOLT	2	0.03/unit
150T-3-062	17	GB/T5789	M6×16 BOLT	4	0.04/unit
150T-3-063	18	GB/T5789	M8×16 BOLT	2	0.06/unit
150T-3-064	19		HOLDER,L,REAR FENDER	1	0.65
150T-3-065	20		HOLDER,R,REAR FENDER	1	0.65

图21 油箱总成



图21 油箱总成

TOTAL NO.	PEF NO.	PART NO.	ENGLISH NAME	Q'TY	UNIT PRICE(\$)
150T-3-066	1		CAP COMP FUEL FILLER	1	0.65
150T-3-067	2		FUEL SENSOR	1	1.7
150T-3-068	3		FUEL TANK	1	10
150T-3-069	4		TUBE I	1	0.3
150T-3-070	5		FUEL COCK	1	1.3
150T-3-071	6		TUBE II	1	0.3
150T-3-072	7		BEAR PRESS PIPE	1	0.3
150T-3-073	8		FILTER	1	0.4
150T-3-074	9		TUBE III	1	0.2
150T-3-075	10		TUBE III	1	0.65
150T-3-076	11	GB/T5789	M6×16 BOLT	2	0.04/unit

图22 座垫、空气滤清器、后尾架总成



图22 座垫、空气滤清器、后尾架总成

TOTAL NO.	PEF NO.	PART NO.	ENGLISH NAME	Q'TY	UNIT PRICE(\$)
150T-3-077	1		MIRROR ASSY,L	1	7
150T-3-078	2		MIRROR ASSY,R	1	7
150T-3-079	3	GB/T70.1	M8×45 SCREW	2	0.2/unit
150T-3-080	4	GB/T93	WASHER 8	2	0.04/unit
150T-3-081	5		AIR CLEANER	1	10
150T-3-082	6		CLIP	2	0.5/unit
150T-3-083	7		CUSHION	1	16
150T-3-084	8	GB/T5789	M8×16 BOLT	2	0.06/unit
150T-3-085	9		TOOL SET	1	2.3
150T-3-086	10		COVER,REAR TAILSTOCK	1	4
150T-3-087	11		REAR TAILSTOCK	1	4
150T-3-088	12	GB/T5789	M8×12 BOLT	2	0.05/unit
150T-3-089	13	GB/T5789	M6×12 BOLT	6	0.03/unit

图23 消声器总成

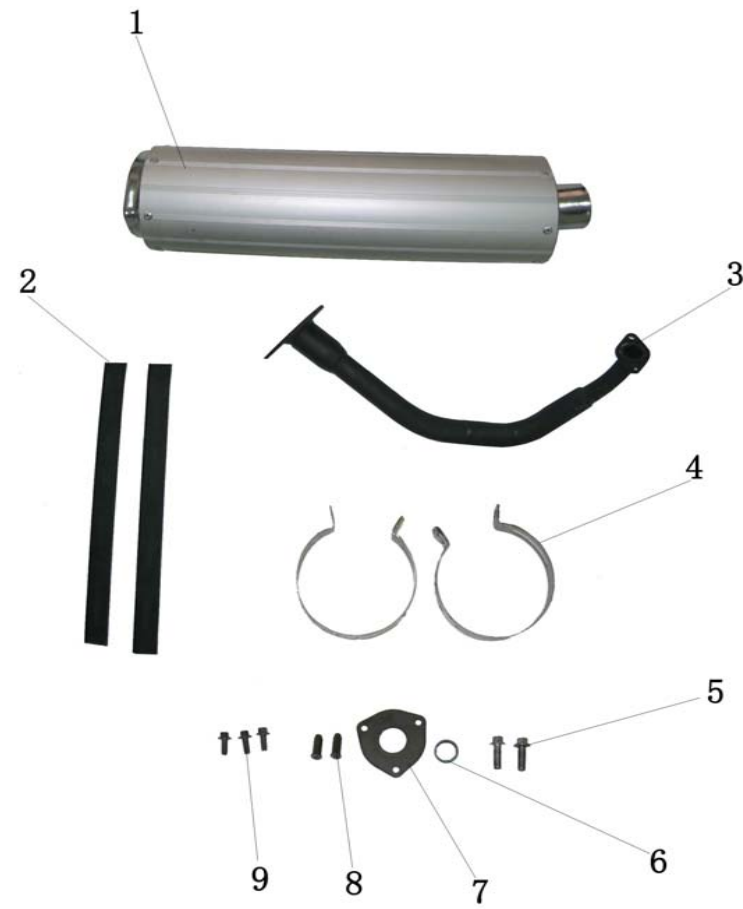


图23 消声器总成

TOTAL NO.	PEF NO.	PART NO.	ENGLISH NAME	Q'TY	UNIT PRICE(\$)
150T-3-090	1		MUFFLER BARREL	1	21
150T-3-091	2		RUBBER PAD	2	1.6/set
150T-3-092	3		MUFFLER PIPE	1	2
150T-3-093	4		COLLAR	2	2/set
150T-3-094	5	GB/T5789	M10×30 BOLT	2	0.2/unit
150T-3-095	6		GASKET	1	0.33
150T-3-096	7		CONNECTING BOARD	1	0.3
150T-3-097	8	GB/T923	M6 NUT	2	0.06/unit
150T-3-098	9	GB/T5789	M8×20 BOLT	3	0.07/unit

图24 主撑、边撑总成



图24 主撑、边撑总成

TOTAL NO.	PEF NO.	PART NO.	ENGLISH NAME	Q'TY	UNIT PRICE(\$)
150T-3-099	1		MAIN STAND	1	3.2
150T-3-100	2		SPRING,MAIN STAND	1	0.3
150T-3-101	3		CUSHION RUBBER	1	0.2
150T-3-102	4	GB/T5789	M10×25 BOLT	2	0.1/unit
150T-3-103	5	GB/T818	M6×16 SCREW	1	0.03
150T-3-104	6	GB/T6177.1	M6 NUT	1	0.06
150T-3-105	7		BUSH	2	0.3/unit
150T-3-106	8		SIDE STAND	1	2
150T-3-107	9		BOLT,SIDE STAND	1	0.3
150T-3-108	10		SPRING,SIDE STAND	1	0.3

图25-1 电器总成
(ELECTRIC APPLIANCE ASSY)



图25-1 电器总成
(ELECTRIC APPLIANCE ASSY)

总序号 TOTAL NO.	序号 PEF NO.	代号 PART NO.	英文名称 ENGLISH NAME	数量QTY	单价 UNIT PRICE(\$)
150T-3-109	1		SINGING SPARKING RELAY	1	1.1
150T-3-110	2		IGNITION SWITCH	1	6.5
150T-3-111	3	GB/T5789	M6×16 BOLT	5	0.04/unit
150T-3-112	4		RECTIFIER	1	7.31
150T-3-113	5		C.D.I	1	4.6
150T-3-114	6		TAIL LIGHT	1	8
150T-3-115	7		SIDE REFLECTOR	2	0.65/set
150T-3-116	8		REAR REFLECTOR	1	0.5
150T-3-117	9	GB/T6170	M5 NUT	1	0.03
150T-3-118	10		WASHER 5	1	0.01
150T-3-119	11	GB/T6170	NUT M6	2	0.06/unit
150T-3-120	12	GB/T5789	M6×12 BOLT	2	0.03/unit
150T-3-121	13		HEAD LIGHT	1	21
150T-3-122	14	GB/T845	ST4.8×16 SCREW,TAPPING	4	0.02/unit
150T-3-123	15-1		SPEEDOMETER(NORMAL)	1	12
150T-3-124	15-2		METER(GLOWNING)	1	33
150T-3-125	16	GB/T845	ST4.2×16 SCREW,TAPPING	3	0.02/unit
150T-3-126	17		FR.WINKER LIGHT	2	3/set
150T-3-127	18	GB/T845	ST4.8×12 SCREW,TAPPING	4	0.02/unit

图25-2 电器总成
(ELECTRIC APPLIANCE ASSY)

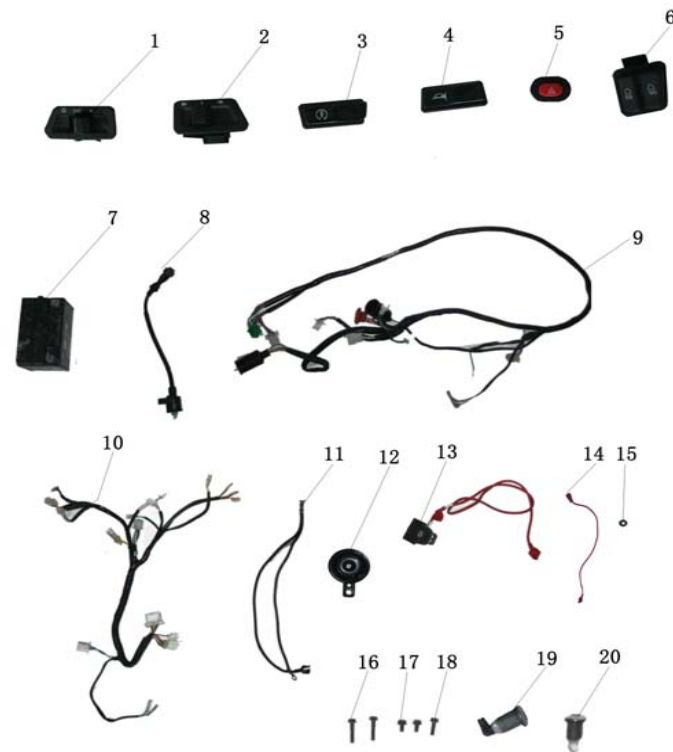


图25-2 电器总成
(ELECTRIC APPLIANCE ASSY)

总序号 TOTAL NO.	序号 PEF NO.	代号 PART NO.	英文名称 ENGLISH NAME	数量QTY	单价 UNIT PRICE(\$)
150T-3-128	1		SWITCH,LIGHT	1	0.81
150T-3-129	2		SWITCH,TURNING	1	0.81
150T-3-130	3		SWITCH,START	1	0.81
150T-3-131	4		SWITCH,HORN	1	0.81
150T-3-132	5		SWITCH,STOP SIGNAL LIGHT	1	0.81
150T-3-133	6		SWITCH,CHANGING LIGHT	1	0.81
150T-3-134	7		BATTERY	1	28
150T-3-135	8		IGNITION COIL COMP	1	2.2
150T-3-136	9		HARNES WIRE	1	9
150T-3-137	10		SIDE WIRE	1	4
150T-3-138	11		GROUND WIRE	1	1.6
150T-3-139	12		HORN	1	1.3
150T-3-140	13		REPLAY	1	2
150T-3-141	14		POWER WIRE	1	0.7
150T-3-142	15	GB/T6171	M6 NUT	1	0.06
150T-3-143	16	GB/T5789	M6×30 BOLT	2	0.05/unit
150T-3-144	17	GB/T5789	M6×12 BOLT	2	0.04/unit
150T-3-145	18	GB/T5789	M6×20 BOLT	1	0.04
150T-3-146	19		CUSHION LOCK	1	1.5
150T-3-147	20		FRONT BOX ,LOCK	1	1.6

图26-1 塑料件



图26-1 塑料件

TOTAL NO.	PEF NO.	PART NO.	ENGLISH NAME	Q'TY	UNIT PRICE(\$)
150T-3-148	1		HELMET FORWARD(OLD STYLE)	1	5
150T-3-149	2		HELMET BACKWARD(OLD STYLE)	1	2.3
150T-3-150	3		COVER BOARD ,BRAKE DISK(OLD)	1	0.2
150T-3-151	4			1	0.2
150T-3-152	5		R,FENDER ,HELMET FORWARD	1	0.2
150T-3-153	6	GB/T823	M5×25 SCREW	1	0.02
150T-3-154	7		PLASTIC SCREW	3	0.02/unit
150T-3-155	8	GB/T845	ST4.2×12 SCREW TAPPING	4	0.03/unit
150T-3-156	9	GB/T845	ST4.2×16 SCREW TAPPING	28	0.03/unit
150T-3-157	10	GB/T845	ST4.8×12 SCREW TAPPING	2	0.03/unit
150T-3-158	11		FRONT PANEL (OLD STYLE)	1	7
150T-3-159	12		CLIP	14	0.07/unit
150T-3-160	13		FORWARD,FR FENDER	1	3.3
150T-3-161	14		BACKWARD,,FR FENDER	1	2
150T-3-162	15	GB/T5789	M6×16 BOLT	3	0.04/unit
150T-3-163	16	GB/T818	M6×16 SCREW	6	0.04/unit
150T-3-164	17		FRONT BOARDING (OLD STYLE)	1	12
150T-3-165	18		FR,L.DECORATIVE SHEET (OLD S	1	0.7
150T-3-166	19		FR,R.DECORATIVE SHEET (OLD S	1	0.7
150T-3-167	20	GB/T845	ST4.8×16 SCREW TAPPING	2	0.03/unit
150T-3-168	21		BOTTOM COVER	1	1
150T-3-169	22	GB/T5789	M6×12 BOLT	4	0.04/unit
150T-3-170	23		COVER MIDDLE	1	1.3
150T-3-171	24		CENTER COVER	1	1.3

图26-2 塑料件



图26-2 塑料件

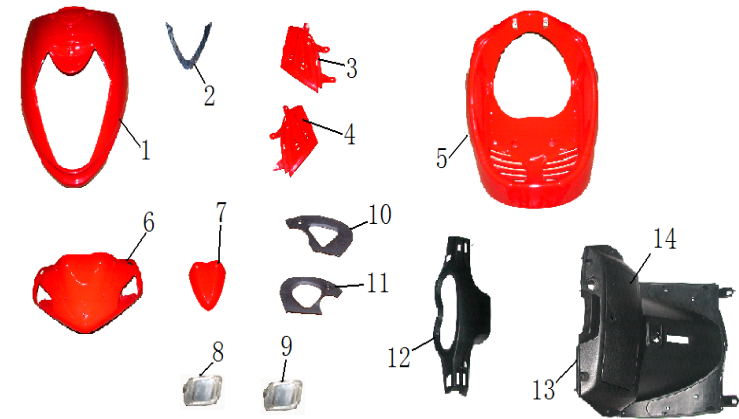
TOTAL NO.	PEF NO.	PART NO.	英文名称 ENGLISH NAME	数量Q'TY	单价 UNIT PRICE(\$)
150T-3-172	1		LR,BOARDING	1	10
150T-3-173	2		RR ,BOARDING	1	10
150T-3-174	3		RR.DECORATIVE SHEET	1	2.44
150T-3-175	4		LR,DECORATIVE SHEET	1	2.44
150T-3-176	5		REAR BOARDING	1	1.3
150T-3-177	6		REAR PROTECTING BAR	1	0.3
150T-3-178	7	GB/T5789	M6×12 BOLT	2	0.04/unit
150T-3-179	8		PLASTIC,SCREW	2	0.02/unit
150T-3-180	9	GB/T845	ST4.2×12 SCREW,TAPPING	4	0.02/unit
150T-3-181	10	GB/T845	ST4.8×16 SCREW,TAPPING	8	0.02/unit
150T-3-182	11		CLIP	8	0.07/unit
150T-3-183	12		FOOTREST	1	5
150T-3-184	13		R.PROTECTING BAR	1	4
150T-3-185	14		L.PROTECTING BAR	1	4
150T-3-186	15		HELMET HANGER COMP	1	0.3
150T-3-187	16		CLIP NUT	2	0.2/unit
150T-3-188	17	GB/T823	M5×25 SCREW	2	0.05/unit
150T-3-189	18	GB/T845	ST4.2×16 SCREW,TAPPING	9	0.03/unit
150T-3-190	19	GB/T5789	M6×30 BOLT	2	0.05/unit
150T-3-191	20	GB/T5789	M6×16 BOLT	4	0.04/unit
150T-3-192	21	GB/T818	M6×16 SCREW	2	0.04/unit
150T-3-193	22		LUGGAGE BOX	1	4
150T-3-194	23		OBSERVE COVER,CARBURETOR	1	0.7
150T-3-195	24	GB/T6177.1	M6 ,NUT	3	0.06/unit

150T-3-196	25		FRONT BOX	1	5
150T-3-197	26		FRONT BOX,LOCK	1	0.7
150T-3-198	27		REAR FENDER	1	1.95



150T-3-206	PEF NO.	PART	ENGLISH NAME	Q'TY	UNIT
150T-3-207	1		TAIL BOX	1	20
150T-3-208	2		ANTENNA,RECORDER	1	6
150T-3-209	3		SEAT SPONGE	1	1
150T-3-210	4	GB/T818	M8*50 SCREW	4	0.3/unit
150T-3-211	5	GB/T818	M8*25 SCREW	4	0.2/unit
150T-3-212	6	GB/T97.1	GASKET 8	8	0.1/unit
150T-3-213	7	GB/T6172.1	HEX NUT M8	8	0.3/unit
150T-3-214	8		SOLEPLATE TAIL BOX	1	6
150T-3-215	9		FIXING BAR TAIL BOX	2	1/unit
	10		SHELVE TAIL BOX	2	0.7/unit

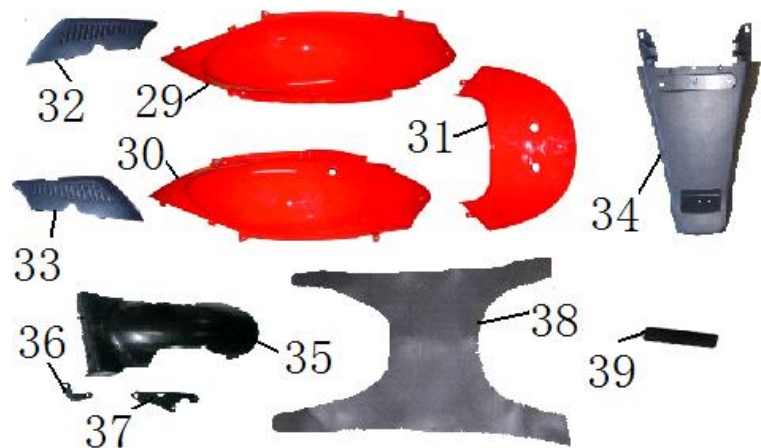
THE FOLLOWING PARTS IS THE DIFFERENT PARTS
OF PHANTOM FROM OLD EAGLE



	序号		英文名称	数量	价格USD
	1		Front pannel	1	10
	2		Decorative bar	1	2.6
	3		vent grid, left	1	1.3
	4		vent grid, left	1	1.3
	5		FRONT BOARDING	1	23
	6		HEAD COVER	1	6.5
	7		DECORATIVE COVER	1	5
	8		BRAKING CYLINDER	1	0.3
	9		REAR OBSERVER, BRAKING CYLINDER1	1	0.3
	10		LEFT PROTECTIVE COVER	1	0.5
	11		RIGHT PROTECTIVE COVER	1	0.5
	12		SPEEDOMETER COVER	1	2.3
	13		FRONT STROAGE BOX	1	5
	14		STROAGE BOX	1	0.7



	序号	规格	英文明	数量	价格USD
	15		HANGER	1	0.3
	16		FENDER	1	4
	17		FENDER	1	2.5
	18	M6×16	CROSS SCREW	1	0.03
	19	M6×16	CROSS SCREW	6	0.02
	20		STORAGE BOX	1	4
	21		COVER, BOTTOM	1	0.7
	22		STORAGE BOX	1	2
	23		PLATE,FOOTREST	1	5
	24		COVER, BATTERY	1	1
	25		LEFT PROTECTIVE BAR	1	4.5
	26		RIGHT PROTECTIVE BAR	1	4.5
	27		BOTTOM FENDER	1	1
	28	6	BOLT	4	0.04



	序号		英文名称	数量	价格USD
150T3-3-172	29		LEFT SIDE COVER	1	10
150T3-3-173	30		RIGHT SIDE COVER	1	10
150T3-3-176	31		REAR COVER	1	3
150T3-3-165	32		LEFT VENT GRID	1	0.5
150T3-3-166	33		RIGHT VENT GRID	1	0.5
150T3-3-114	34		REAR FENDER	1	2
150T3-3-198	35		REAR INNER FENDER	1	2
150T3-3-064	36		WHEEL	1	0.3
150T3-3-165	37		WHEEL	1	0.65
150T3-3-183-1	38		MAT, FOOTREST PLATE	1	4
150T3-3-056-1	39		COVER, VIN CODE	1	0.3



	序号	规格	英文名称	数量	价格USD
150T3-3-121	1		Headlight Assy.	1	27
150T3-3-126	2		left turning lamp	1	1.5
150T3-3-126-1	3		Right turning lamp	1	1.5
150T3-3-114	4		Tail lamp assy.	1	10
150T3-3-115	5		Reflector	2	0.6
250T3-2-210	6	5789-	Bolt	2	0.03
250T3-2-212	7	845-	Screw	6	0.02
250T3-2-209	8	845-	Screw	6	0.02

目 录 (CONTENTS)

图1FIG1	(CRANKCASE COMP).....	3
图2FIG2	(GEAR-BOX COVER ASSY).....	5
图3FIG3	(LEFT CRANKCASE COVER).....	7
图4FIG4	(R CRANKCASE COVER ASSY).....	9
图5FIG5	(CYLINDER ASSY).....	11
图6FIG6	(CYLINDER HEAD ASSY).....	13
图7FIG7	(CYLINDER HEAD COVER ASSY).....	15
图8FIG8	(CRANKSHAFT,PISTON COMP).....	17
图9FIG9	(ELECTRIC STARTING PARTS).....	19
图10FIG10	(CVT ASSY).....	21
图11FIG11	(GENERATOR PARTS).....	23
图12FIG12	(GENERATOR PARTS).....	25
图13FIG13	(SHROUD ASSY).....	27
图14FIG14	(REAR BRAKE ASSY).....	29
图15FIG15	(CARBURETOR).....	31
图16FIG16	(LUBRICATION PUMP ASSY).....	33
图17FIG17	(STEERING HANDLE ASSY).....	35
图18FIG18	(FR&RR SHOCK ABSORBER).....	37
图19FIG19	(FR&RR WHEEL ASSY).....	39
图20FIG20	(FRAME ASSY).....	41
图21FIG21	(FUEL TANK ASSY).....	43
图22FIG22	(FUEL AND AIR FILTER ASSY).....	45
图23FIG23	(MUFFLER ASSY).....	47
图24FIG24	(MAIN&SIDE STAND ASSY).....	49
图25-1FIG25-1	ELECTRIC APPLIANCE ASSY).....	51
图25-2FIG25-2	(ELECTRIC APPLIANCE ASSY).....	53
图26-1FIG26-1	(PLASTIC PARTS).....	55
图26-2FIG26-2	(PLASTIC PARTS).....	57
图26-3FIG26-3	(PLASTICPARTS).....	59
图27FIG27	(SOUND EQUIPMENT).....	61
图28FIG28	(TAIL BOX).....	63
图29FIG29	(MUFFLER , FOOTRESTALUM).....	65
图30FIG30	(REAR BRAKE DISK).....	67
附表ATTACH	LAMP SPECIFICATION).....	68

目 录 (CONTENTS)

图1FIG1	CRANKCASE COMP).....	3
图2FIG2	(GEAR-BOX COVER ASSY).....	5
图3FIG3	(LEFT CRANKCASE COVER).....	7
图4FIG4	(R CRANKCASE COVER ASSY).....	9
图5FIG5	CYLINDER ASSY).....	11
图6FIG6	(CYLINDER HEAD ASSY).....	13
图7FIG7	(CYLINDER HEAD COVER ASSY).....	15
图8FIG8	(CRANKSHAFT,PISTON COMP).....	17
图9FIG9	(ELECTRIC STARTING PARTS).....	19
图10FIG10	(CVT ASSY).....	21
图11FIG11	(GENERATOR PARTS).....	23
图12FIG12	(GENERATOR PARTS.....	25
图13FIG13	SHROUD ASSY).....	27
图14FIG14	(REAR BRAKE ASSY).....	29
图15FIG15	(CARBURETOR).....	31
图16FIG16	(LUBRICATION PUMP ASSY).....	33
图17FIG17	(STEERING HANDLE ASSY).....	35
图18FIG18	FR&RR SHOCK ABSORBER).....	37
图19FIG19	(FR&RR WHEEL ASSY).....	39
图20FIG20	(FRAME ASSY).....	41
图21FIG21	(FUEL TANK ASSY).....	43
图22FIG22	(FUEL AND AIR FILTER ASSY).....	45
图23FIG23	(MUFFLER ASSY).....	47
图24FIG24	MAIN&SIDE STAND ASSY).....	49
图25-1FIG25-1	(ELECTRIC APPLIANCE ASSY).....	51
图25-2FIG25-2	(ELECTRIC APPLIANCE ASSY).....	53
图26-1FIG26-1	(PLASTIC PARTS).....	55
图26-2FIG26-2	(PLASTIC PARTS).....	57
图26-3FIG26-3	(PLASTICPARTS).....	59
图27FIG27	(SOUND EQUIPMENT).....	61
图28FIG28	(TAIL BOX).....	63
图29FIG29	(MUFFLER ,FOOTRESTALUM).....	65
图30FIG30	(REAR BRAKE DISK).....	67
附表ATTACH	LAMP SPECIFICATION).....	68

#REF!

